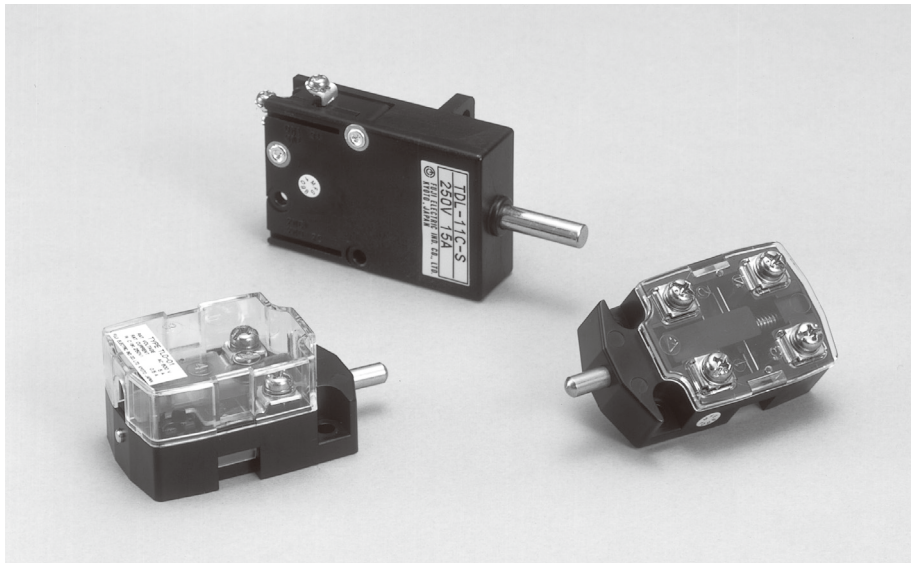




DOOR SWITCH

# T TYPE



## FEATURES

The TLC-W and TLD are applicable as a limit switch (TLC type) for a minute electric current circuit, the door switch (TLD type) for a fluorescent lamp circuit, and other diverse uses in order to ensure high reliability.

### ■ High reliability

Twin contacts are used to ensure the opening / closing action. Dust-proof design of those contacts offers high reliability.

### ■ Simple structure and design

A transparent cover is used to facilitate checking the inside.

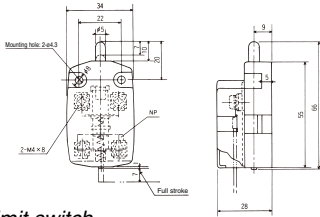
## SPECIFICATIONS (RATINGS, PERFORMANCE)

| Specification                         |                                             | Door switch                                 |                        | Limit switch                     |                        |                                                 |                       |
|---------------------------------------|---------------------------------------------|---------------------------------------------|------------------------|----------------------------------|------------------------|-------------------------------------------------|-----------------------|
|                                       |                                             | TLD TYPE                                    |                        | TLC-W TYPE                       |                        | TDL TYPE                                        |                       |
| Rated insulation voltage (UI)         |                                             | 600V AC / DC                                |                        |                                  |                        | 250V AC / DC                                    |                       |
| Rated current-carrying capacity (Ith) |                                             | 5A                                          |                        | 10A                              |                        | 16A                                             |                       |
| Operating load                        |                                             | Contact 01, 10                              | 7.0±1N (stroke: 6.5mm) | Contact 01, 10                   | 7.0±1N (stroke: 6.5mm) | Contact 11C, 12C                                | 5.0±1N (stroke: 20mm) |
|                                       |                                             | Contact 11                                  | 7.0±1N (stroke: 6.5mm) | Contact 11                       | 7.0±1N (stroke: 6.5mm) | Contact 11C                                     | 5.0±1N (stroke: 20mm) |
| Contact pressure                      |                                             | b contact: 2.0N, a contact: 3.5N            |                        | b contact: 2.0N, a contact: 3.5N |                        | 0.5N                                            |                       |
| Full stroke                           |                                             | 7mm                                         |                        |                                  |                        | 0mm                                             |                       |
| Contact resistance                    |                                             | 10mΩ max. (initial)                         |                        |                                  |                        | 50mΩ max. (initial)                             |                       |
| Mechanical life                       |                                             | 250,000 operations or more                  |                        | 10,000,000 operations or more    |                        | 500,000 operations or more                      |                       |
| Electrical life                       |                                             | 100,000 operations or more                  |                        | 1,000,000 operations or more     |                        | 100,000 operations or more                      |                       |
| Withstand voltage                     | Between terminals                           | 1 minute at 2,500V AC                       |                        | 1 minute at 2,500V AC            |                        | 1 minute at 1,000V AC                           |                       |
|                                       | Between terminal and non-live metallic part | 1 minute at 2,500V AC                       |                        | 1 minute at 2,500V AC            |                        | 1 minute at 1,500V AC                           |                       |
|                                       | Between terminal and ground                 | 1 minute at 2,500V AC                       |                        | 1 minute at 2,500V AC            |                        | 1 minute at 2,500V AC                           |                       |
| Contact                               |                                             | 110V AC, 2A (inductive load)<br>110V DC, 1A |                        | 24V DC, 6A (resistance load)     |                        | 250V AC, 15A (resistance load)<br>125V DC, 0.6A |                       |

## STANDARD PRODUCTS

### Door switch

#### TLD TYPE



Mounting hole size



#### PRODUCT CODING

#### TLD-01

Basic type

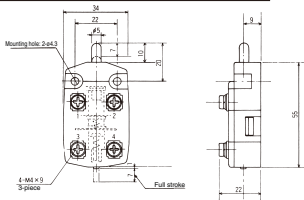
#### Contact

| Code | Contact |
|------|---------|
| 10   | 1a      |
| 01   | 1b      |
| 11   | 1a1b    |

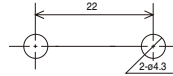
a : Normal open  
b : Normal close

### Limit switch

#### TLC-W TYPE



Mounting hole size



#### PRODUCT CODING

#### TLC-W-10

Basic type

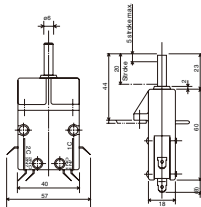
#### Contact

| Code | Contact |
|------|---------|
| 10   | 1a      |
| 01   | 1b      |
| 11   | 1a1b    |

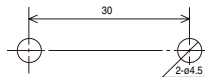
a : Normal open  
b : Normal close

### Limit switch

#### TDL TYPE



Mounting hole size



#### PRODUCT CODING

No. of microswitches      Microswitch mounting position

#### TDL-11C

Basic type

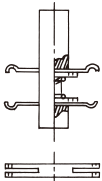
#### Contact details

| Code | Description of microswitch mounting position |
|------|----------------------------------------------|
| 11C  | 1 microswitch for 1 NC                       |
| 12C  | 1 microswitch for 2 NC                       |
| 22C  | 2 microswitches                              |

For microswitch with screw terminals, designate TDL-○○○-S.

\* The terminals are Faston #187 series (0.5 to 2.27 mm<sup>2</sup>).  
For the applicable receptacles, see P. 290.

## CONTACT STRUCTURE



|       | Contact surface                  |
|-------|----------------------------------|
| TLD   | Silver plated                    |
| TLC-W | Gold plated (30μ) silver contact |

| TLD type                |                                     |
|-------------------------|-------------------------------------|
| Terminal symbol         |                                     |
| Contact action (stroke) |                                     |
| Contact close           | <input checked="" type="checkbox"/> |
| Contact open            | <input type="checkbox"/>            |

| TLC-W type              |                                     |
|-------------------------|-------------------------------------|
| Terminal symbol         |                                     |
| Contact action (stroke) |                                     |
| Contact close           | <input checked="" type="checkbox"/> |
| Contact open            | <input type="checkbox"/>            |

| TDL type                |                                     |
|-------------------------|-------------------------------------|
| Terminal symbol         |                                     |
| Contact action (stroke) |                                     |
| Contact close           | <input checked="" type="checkbox"/> |
| Contact open            | <input type="checkbox"/>            |